

MEGA 300 Plus
RANDOM ACCESS ANALYZER

TECHNICAL CHARACTERISTICS

OPERATING MODE:

320 tests/h + 180 electrolytes (ISE optional)
True Random Access Analyzer
Routine, urgency (STAT), profile

SAMPLE SYSTEM:

40 positions for primary tubes or sample cups or 40 positions for the pre-dilution
Internal barcode reader (optional)
Sample volume from 3 µl to 70 µl (with 1 µl of increment)
Programmable pre and post sample dilution rate (Autodilution)
Automatic repetition of sample

REAGENT SYSTEM:

30+30 refrigerated reagents on-line, bottles of 50, 30 and 10 ml (5ml bottles optional)
Single refrigerated tray containing reagents
Air cooling reagent plate system (Dry circulation, condensation free)
Internal barcode reader (optional)

CUVETTE SYSTEM:

300 µl typical reaction volume per test (max volume 600 µl)
Analytical plate: 39 quartz cuvettes immersed in a 37°C water bath
Cuvette cleaning automatic pressure system
Automatic cuvettes quality check
Optical path 7mm

PROBE SYSTEM:

Probe capacitive liquid sensor
Anti-crash device
Probe mixing system
Micro metering syringe: R1 from 250 to 500 µl (increments of 1 µl), R2 from 1 to 250 µl (increments of 1 µl)
Water consumption 1.2 Liter/hour

OPTICAL SYSTEM:

Calibrated long life halogen lamp 12V, 20W
Built-in multi-filter photometer with 8 filters from 340 to 700nm
Photometer linearity from -500 to 2,800 Abs ± 1%
Photometric sensitivity from 0,0005 Abs

ANALYTICAL MODES:

Open System with an unlimited number of methods.
Assay type: End Point, Fixed Time, Kinetic, IR-End Point, IR-Fixed Time, IR-Kinetic
Calculation type: Factor, Standard, Point to Point, Linear, Quadric, Cubic, Cubic Spline, Tetric, Lagrange, Log-Logit 4, Esponential

SYSTEM:

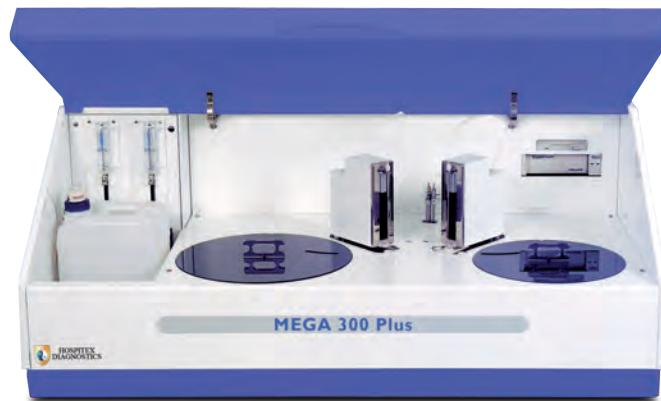
PC: Built-in with Host interface
Full printers compatibility
LIS connection
Power supply: 230/115 Vac 50/60Hz - 300W
Dimensions: 103 x 67 x 45 cm.
Weight: 104 Kg



Hospitex Diagnostics reagents line has been adapted on Forte system to offer the best quality for analytical testing.

Reagents:

- | | |
|-------|---------------------|
| ALB | CK NAC |
| BIL-D | GGT |
| BIL-T | GOT / AST |
| CA | GPT / ALT |
| CI | LDH |
| CHOL | LIP |
| CREA | UREA UV |
| GLUC | HbA1c |
| HDL | ASO |
| Fe | C3 |
| LDL | C4 |
| Mg | CRP |
| PHOS | Ferritin |
| TP | IgA |
| TG | IgG |
| UA | IgM |
| Zn | Kappa Light Chains |
| ALP | Lambda Light Chains |
| AMY | Micro ALB |
| CK MB | RF |
| | TRSF |

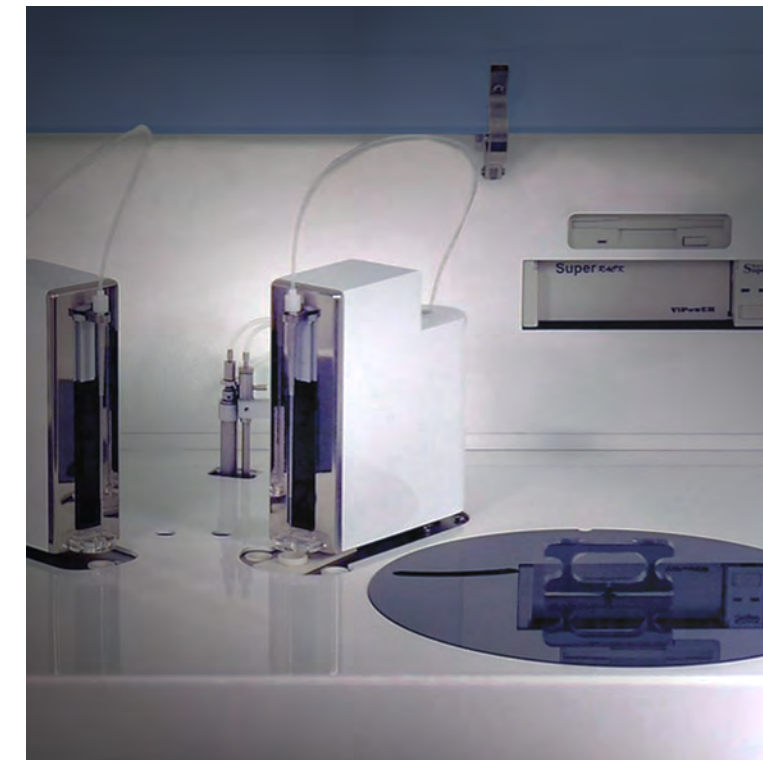


CE Marked

CLINICAL CHEMISTRY



HOSPITEX
DIAGNOSTICS



MEGA 300 Plus
RANDOM ACCESS ANALYZER

All illustrations and specifications contained in this folder are based on the latest information available at the time of printing.
HOSPITEX DIAGNOSTICS reserves the right to make changes to materials, equipment and models, and to discontinue models at any time without notice.



HOSPITEX
DIAGNOSTICS



Via Arno 23/25
50019 Sesto Fiorentino
FIRENZE - ITALY

Tel. +39.055.37.40.83
Fax +39.055.37.40.84
e-mail: hospitex@hospitex.it

www.hospitex.com

MEGA 300 Plus

True Random Access Analyzer

Speed and flexibility in lab



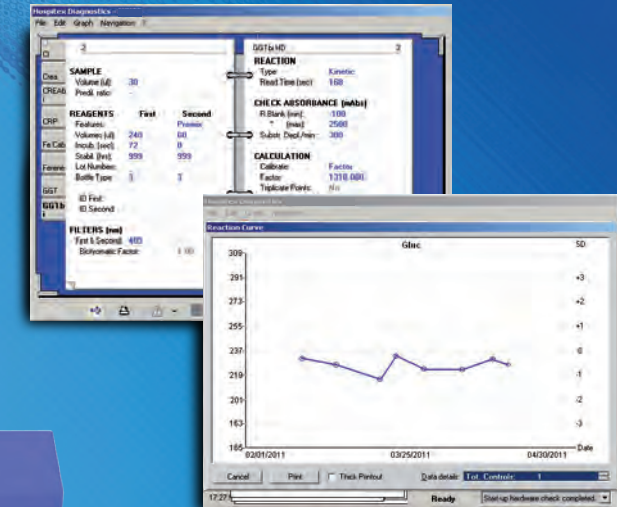
ISE Module
Na⁺ / K⁺ / Cl⁻



Washing station
innovative pressure
cleaning system

Software platform

Wide range of clinical chemistry
and turbidimetric tests on board



Measurement monitoring

Calibration curves, reaction graph
QC results

Barcoded reagent tray

40 + 40 sample positions
20 controls and calibrators

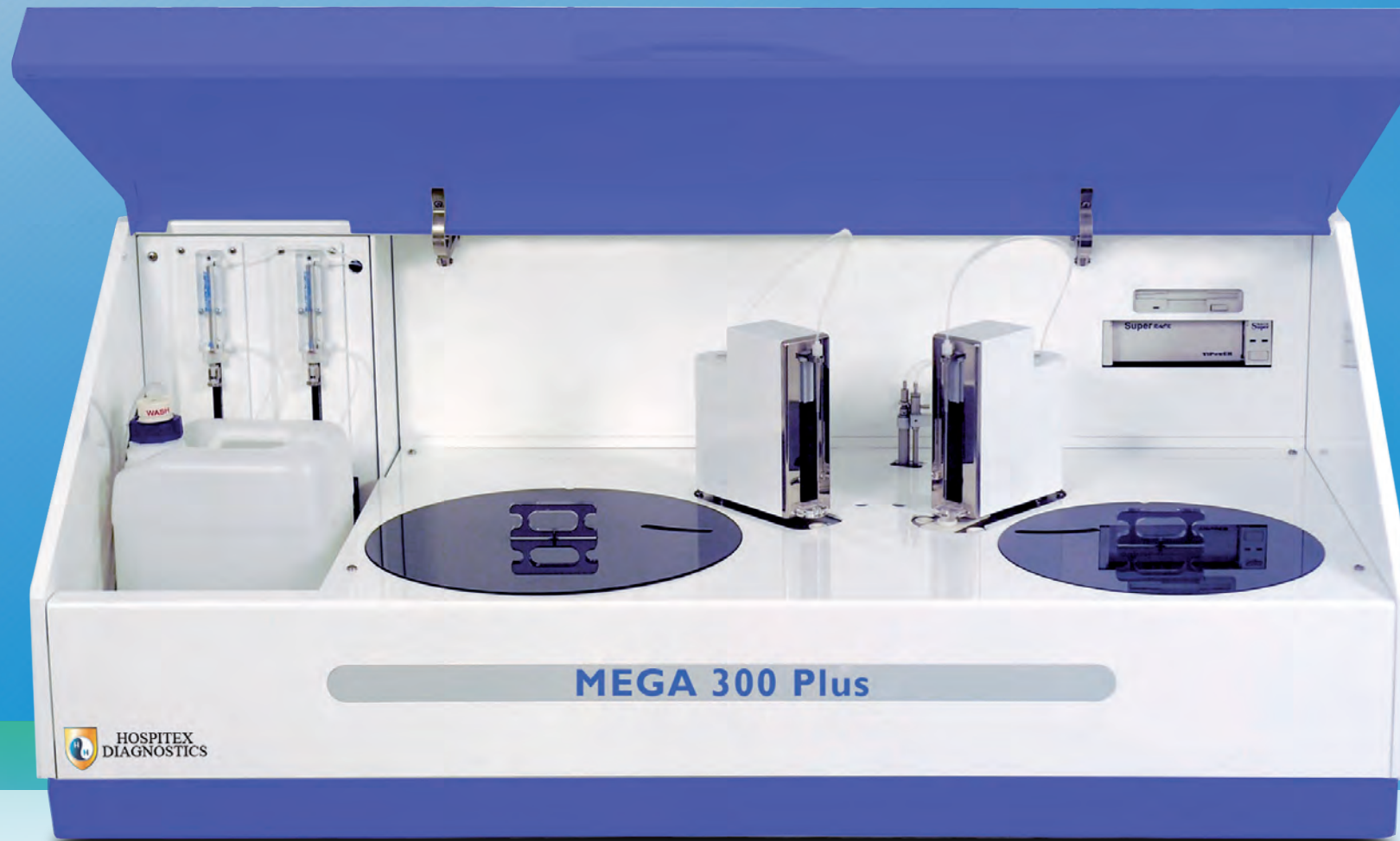


Reaction plate

39 quartz cuvettes
in water bath 37°C

Barcoded sample tray

30 + 30 refrigerated reagents



Optimized workflow

The Instrument throughput is 320 tests per hour independently from the type of method, with ISE (optional) it reaches more than 500 tests per hour. Open system, typical reaction volume of 300µl.

Compact

Tray 1: position for 30+30 on-line reagents in extractable tray. Tray 2: 40 positions for primary tubes or small sample cups. 20 positions are reserved for Standards, Controls and STATS. An air-cool circulation through the reagent compartment keeps liquids refrigerated and avoids water condensation.

Minimal maintenance

User replaceable lamp. Low water consumption. No deionizer station needed. A double power supply eliminates electrical noises and voltage fluctuations. Long life syringes, maintenance free. Thanks to a simplified mechanical assembling concept no hardware calibration is required.

Precision and accuracy

The sampling needle is equipped with a level sensor and a mixer for an accurate sample preparation. Thanks to an internal and external cleaning process, there is no risk of needle contamination. Sample volume from 3µl to 70µl. Integrated high quality direct ISE module for electrolytes (optional).

Low running cost

The reaction plate carries 39 high quality long life quartz cuvettes. Quartz cuvettes have low maintenance cost and are the best choice for immunoturbidimetry testing. A washer and dryer cuvette station ensures a perfect cleaning with a pressure system.

Friendly software

A built-in PC, with an intuitive user interface, gives an easy access to the instrument functions and data management. Host connection and barcode capability ensures intuitive operation on the instrument.